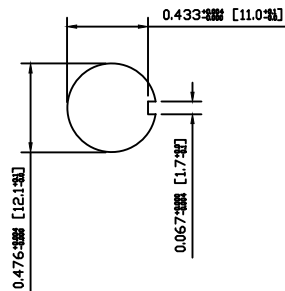
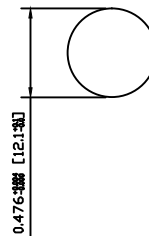


SUGGESTED PANEL CUTOUT



ALTERNATE PANEL CUTOUT



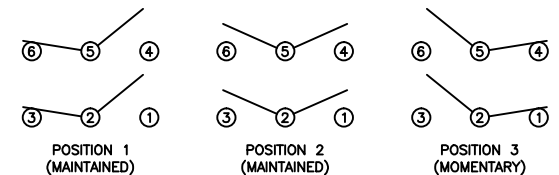
MATERIALS

- BODY: Phenolic, UL94 V-0
- ACTUATOR: Nickel Plated Brass
- BUSHING: Nickel Plated Brass
- HOUSING: Stainless Steel
- HARDWARE: Nickel Plated Steel
- FUNCTION PLATE: Stainless Steel
- SPACER PLATE: Laminate Board
- SPRING: Steel
- PLUNGER: Nylon
- MOBILE CONTACT: Silver Plated Copper
- MOBILE CONTACT PIVOT: Silver Plated Copper
- CONTACTS: Silver Alloy Clad Copper
- TERMINALS: Brass Steel

SPECIFICATIONS

- FUNCTION: 2P2T ON-OFF-(ON)
- RATINGS: ANSI/UL1054 and CAN/CSA C22.2 No.55 (E194579): 20A 125VAC [cURus], 15A 277VAC [cURus], 1.5HP 125/277VAC [cURus]
- CONTACT RESISTANCE: Initial: 50mΩ Max. at 50VAC
- INSULATION RESISTANCE: 800MΩ Min. at 500VDC
- DIELECTRIC STRENGTH: 1,500VAC for 1 Minute
- OPERATING LIFE: 6,000 Cycles [cURus]
- TEMPERATURE: Operating: -20°C to 85°C [cURus]
- APPROVALS: RoHS COMPLIANT

SCHEMATIC



ACTUATOR	B	10/11/16	CAB
BODY	B	10/11/11	CAB
MATERIALS	A	09/06/03	CAB
SPECIFICATIONS	A	09/06/03	CAB
REFERENCE	REV.	DATE	BY

THE INFORMATION CONTAINED IN THIS DOCUMENT IS PROPRIETARY TO E-SWITCH AND IS NOT TO BE COPIED OR TRANSFERRED.

REV.	A	INITIAL RELEASE DESCRIPTION	22076	12/8/2015	MW
			PCR	DATE	DRAWN BY

DIMENSIONS	
INCHES [MILLIMETERS]	
GENERAL TOLERANCES	
0.000~0.236: ±0.004 [0~6: ±0.1]	
0.236~1.181: ±0.012 [6~30: ±0.3]	
1.181~4.724: ±0.020 [30~120: ±0.5]	
SCALE	PROJECTION
DRAWING NOT TO SCALE	

TITLE	
ST26JD00	
ITEM NUMBER	DATE
34-ST26JD00	12/8/2015
REVISION	A